

# Graduate Program in INDUSTRIAL/ORGANIZATIONAL PSYCHOLOGY



# UMBC

THE UNIVERSITIES AT SHADY GROVE



## **Master's of Professional Studies: Industrial/Organizational Psychology** Program offered in Rockville, Maryland

### **I/O Psychology - a professionally-focused, relevant and practical graduate degree**

- » According to the United States Department of Labor Bureau of Labor Statistics, I/O Psychology positions are expected to increase by 26% from 2008 to 2018.
- » There are many diverse career paths available, including working in the private sector, governmental, education, or consulting.
- » Industrial/Organizational psychologists contribute to an organization's success by improving the performance, satisfaction, safety, health and well-being of its employees with many career opportunities opening up with the completion of a Master's degree.

### **When you choose UMBC Professional Programs, you can count on:**

- » A program led by a distinguished faculty of practitioners in the field.
- » An advisory board comprised of representatives from business, industry and government who provide valuable input on program and curriculum development.
- » Classes offered in the evening to accommodate working professionals.
- » Wide-ranging resources offered at a top-notch public research university.

### **Why UMBC?**

- » The M.P.S. degree is a unique, highly applied program, which includes an Advisory Board comprised of representatives from business, industry, and government.
- » The 2017 *U.S. News & World Report Best Colleges* guide ranks UMBC in the top five on its closely-watched Most Innovative Schools list and has recognized UMBC as a global leader in higher education.
- » UMBC provides a comprehensive and quality education at a manageable cost.



[shadygrove.umbc.edu/io](http://shadygrove.umbc.edu/io)

#### **For Program Information:**

Dr. Elliot Lasson | Program Director  
[elasson@umbc.edu](mailto:elasson@umbc.edu) | 301-738-6171

Dr. Elissa Abod | Lecturer and Asst.  
Program Director  
[eabod@umbc.edu](mailto:eabod@umbc.edu) | 301-738-6138

#### **For Application Information:**

[sgprofessionalprograms@umbc.edu](mailto:sgprofessionalprograms@umbc.edu)

## Admission Requirements

### M.P.S.:

- » B.A. or B.S. in Psychology  
-OR- a bachelor's degree in a related field with required prerequisite coursework, which includes an introductory psychology course and a research methods or statistics course.
- » Minimum undergraduate GPA of 3.0 (on a 4.0 scale)
- » GRE scores are not required for admission review; however, they can be submitted to supplement the application.

### International Applicants:

Please visit [shadygrove.umbc.edu/io/international](http://shadygrove.umbc.edu/io/international) for detailed admissions information for international applicants.

- » Please pay special attention to English proficiency and testing requirements

## Admission Deadline

Fall: May 15

This program admits for the Fall semesters only

For detailed application process please visit:  
[shadygrove.umbc.edu/io](http://shadygrove.umbc.edu/io)

## Office of Professional Programs

UMBC's Office of Professional Programs offers a broad array of professionally focused master's degree and certificate programs that address industry needs while anticipating future opportunities.

[professionalprograms.umbc.edu](http://professionalprograms.umbc.edu)

## Curriculum

### MPS: Industrial/Organization Psychology

30 Credits (10 courses)

#### Core Courses (3 Required, Choose 3) 18 Credits (6 Courses)

PSYC 669: Organizational Behavior Management

PSYC 670: Industrial/Organizational Psychology\*

PSYC 671: Seminar in Social Psychology

PSYC 672: Introduction to Data Analytic Procedures\*

PSYC 673: Legal, Ethical and Professional Issues

PSYC 674: Methods of Assessment in I/O Psychology

PSYC 677: Professional Human Resources Practices

**PSYC 698: Capstone Experience\***



\*These courses are required for all students. PSYC 698 is taken during the final semester.

#### Elective Courses (Choose 4) 12 Credits (4 Courses):

PSYC 601: Total Rewards

PSYC 601: Leadership and Talent Development

PSYC 624: Consulting for I/O Psychology

PSYC 676: Human Factors

PSYC 678: Group Decision Making

PSYC 679: Survey Design and Development

PSYC 681: Human Performance Technology

PSYC 682: Change Management

PSYC 683: Advanced Statistics

PSYC 684: Program Evaluation for I/O Psychology

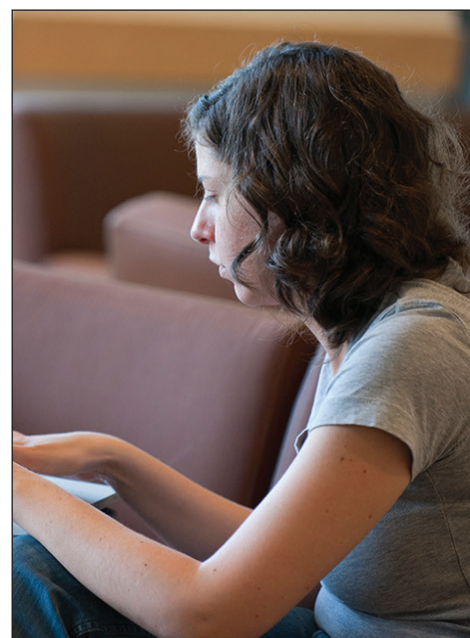
PSYC 687: Job Analysis

PSYC 689: Strategic Planning

PSYC 690: Practicum in I/O Psychology

EDUC 602: Instructional Systems Development I\*

EDUC 671: Principles in Training and Development\*



\*Available online during select semesters through ISD program